

May 2025

Clean up at Canbury Passage... volunteers required



Twenty years on from its unveiling in July 2005, the Canbury Passage mosaic mural is in dire need of a clean, and the wonderful [Save The World Club](#), the creative minds behind the original work, are asking for help in the task.

Volunteers are required to muck in on **Monday 19th May**, with a starter of **sandwiches at The Double Tree Hilton from 12 noon**, followed by **working on the mural from 1 pm to 4 pm**.

Volunteers need to wear clothing appropriate for the weather conditions... something comfortable and something you don't mind getting grubby. Definitely not your best frock! Also bring a bottle of water to keep hydrated.

Please let Kim Porrelli know (kim.porrelli@gmail.com) if you will be coming along to lend some muscle and elbow grease.

Proposed new playground in Canbury Gardens

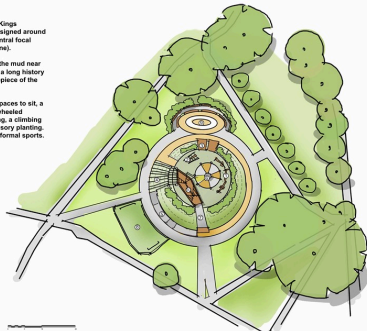
CANBURY GARDEN - Design Option 1 - Thames Riverboat

Concept

Inspired by local legend and the 7 Saxon Kings coronated in Kingston, the play area is designed around 7 concentric circles radiating around a central focal sculpture (inspired by the Coronation Stone).

A 9th century log boat was discovered in the mud near Kingston, and ever since the Thames has a long history of boating, and so a boat forms the centrepiece of the play area inspiring creative play.

The play area incorporates semi-private spaces to sit, a stage to perform or sunbathe, a path for wheeled sports, mounded areas for informal seating, a climbing net, climbing wall, central swings and sensory planting. There is also a small kickabout area for informal sports.



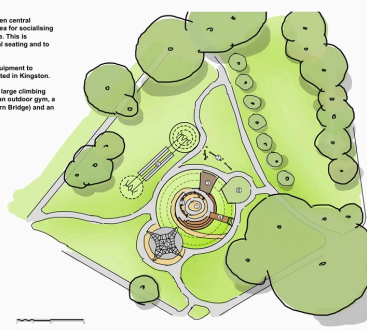
- ① Central Swings
- ② Balancing Swing
- ③ Climbing Wall
- ④ Climbing Net
- ⑤ Wheeled Path
- ⑥ Focal Sculpture
- ⑦ Ramp
- ⑧ Informal Ball Area
- ⑨ Amphitheatre Seating Area
- ⑩ Boat Play Equipment

CANBURY GARDEN - Design Option 2 - Royal Amphitheatre

Concept

The play area is designed around a sunken central amphitheatre (Royal Court) and swing area for socialising with informal seating/ performance space. This is surrounded by a grassy bank for informal seating and to

In addition to the swings, this includes a large climbing net, a climbing wall (Coronation Stone), an outdoor gym, a double zipline, a clattering bridge (Clattern Bridge) and an informal ball area.



- ① Amphitheatre Seating Area
- ② Central Swing Feature
- ③ Climbing Wall
- ④ Clattering Bridge
- ⑤ Climbing Net
- ⑥ Double Zipline
- ⑦ Outdoor Gym
- ⑧ Informal Ball Area

Following the display last month of the designs for the [proposed new playground in Canbury Gardens](#), don't miss the opportunity to make your comments available to the council via: [Have Your Say](#)



Canbury Gardens Tennis Centre - change of phone no.

If you are for tennis, please note the new phone number for the public tennis courts in Canbury Gardens:

020 8546 8455



Met Engage

The Met Police have launched a new service called [Met Engage](#), where you can sign up to receive updates from local police officers on the issues that matter most to you.

For now, this will only be live in South West London, but will be rolled out across the city in the summer.



METROPOLITAN POLICE

MORE TRUST LESS CRIME HIGH STANDARDS

MET ENGAGE

Community crime-fighting

Sign up now to tell us what matters most to you.



MET ENGAGE

Community crime-fighting

We're transforming the Met to become a service that truly delivers for you. Through our new platform Met Engage you can get to know your local officers, help shape how we police your local area and have direct access to key information and advice.

This isn't just a platform for us to tell you what we're doing in your area, it's an opportunity for you to tell us what's concerning you most so we can take action on the things that truly matter to you.

Our service will be tailored to your community.

Sign up today to tell us about the issues affecting you most, receive tailored crime prevention advice and updates on our activity in your area.

metengage.co.uk